

Libraries Deliver

Ambition for Public Libraries in England 2016-2021

Nick Poole, Chief Executive, CILIP
IFLA, August 2016

Context

IN THE UK, PUBLIC LIBRARIES ARE VISITED 282 MILLION TIMES EACH YEAR.



That's more than twice as many visits in a week (5.4 million) as Alton Towers gets in a year



That's more than 772,000 visits per day, every day



That's a whole football stadium's worth of people (32,191) every single HOUR of the year

**SO NEXT TIME SOMEONE SAYS LIBRARIES ARE NO LONGER RELEVANT,
CONSIDER THOSE STATISTICS FOR A MINUTE.**

(AND DURING THAT MINUTE, 536 PEOPLE WILL VISIT A LIBRARY.)

Context

The screenshot shows the BBC News website interface. At the top, there is a navigation bar with the BBC logo, a search bar, and a menu. Below this is a red header with the word "NEWS" in large white letters. A secondary navigation bar lists various news categories: Home, UK, World, Business, Politics, Tech, Science, Health, Education, Entertainment & Arts, and Video & Audio. The "UK" category is selected. Below the navigation, the main content area features a large article titled "Libraries lose a quarter of staff as hundreds close". The article is dated 29 March 2016 and is categorized under "England". A share button is visible next to the date. The article's main image shows a close-up of bookshelves filled with books. A caption below the image reads "Hundreds of libraries have closed across the UK". To the right of the main article, there is a "Top Stories" section with three items: "Rio 2016: GB cyclists target gold" (dated 6 August 2016), "Fuel prices push up UK inflation rate" (dated 16 August 2016), and "NHS dementia atlas reveals patchy care" (dated 16 August 2016). Below the "Top Stories" section is a "Features" section, which is currently empty. The BBC logo is visible in the bottom right corner of the page.

BBC BBC iD Menu Search

NEWS

Find local news

Home **UK** World Business Politics Tech Science Health Education Entertainment & Arts Video & Audio

England Regions

Libraries lose a quarter of staff as hundreds close

29 March 2016 | England Share



THINKSTOCK

Hundreds of libraries have closed across the UK

Top Stories

Rio 2016: GB cyclists target gold
Early medals are on offer in athletics and sailing, as boxer Nicola Adams begins her campaign and GB's cyclists prepare for a potentially historic evening in the velodrome.
6 August 2016

Fuel prices push up UK inflation rate
16 August 2016

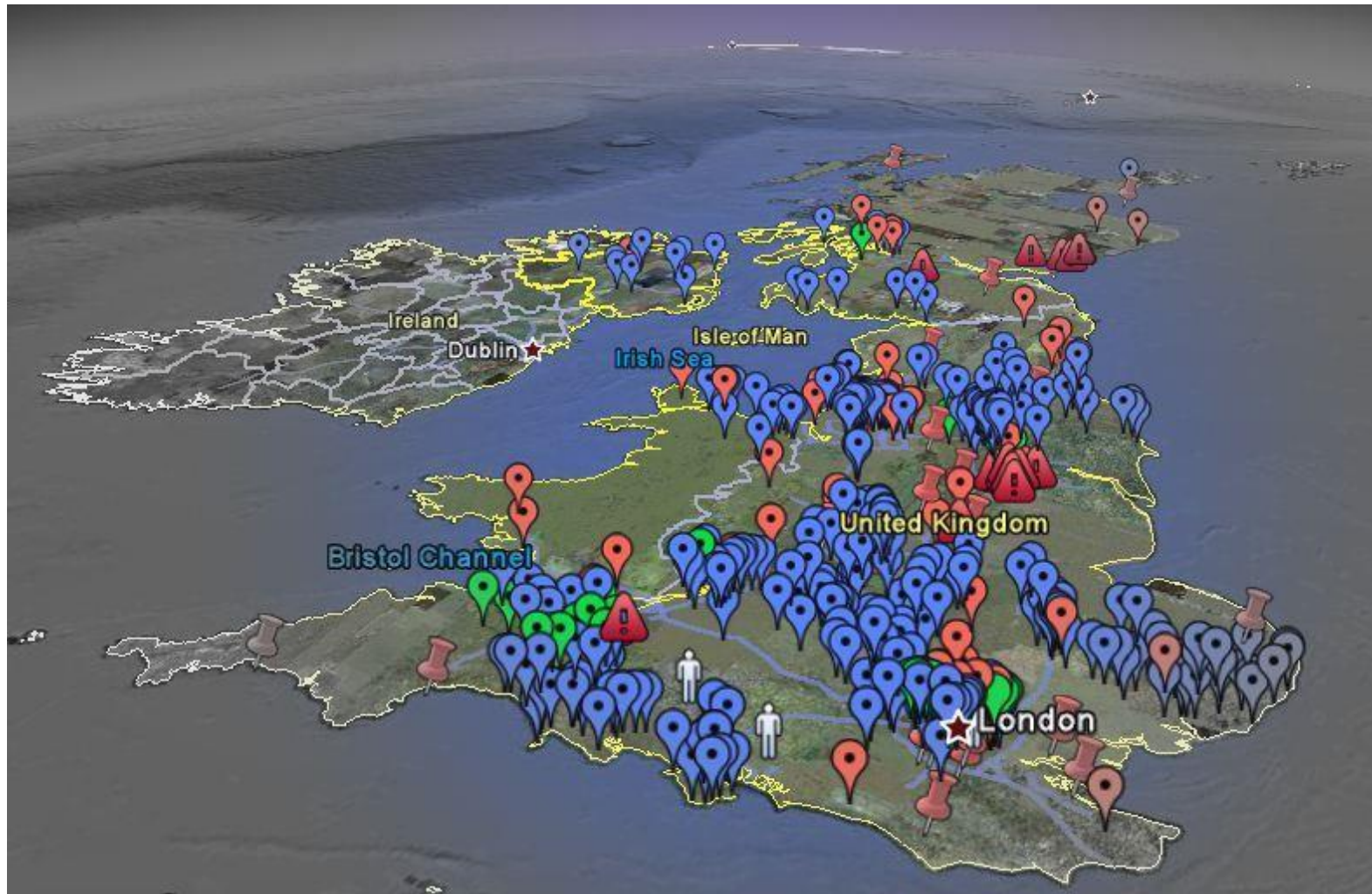
NHS dementia atlas reveals patchy care
16 August 2016

Features

BBC

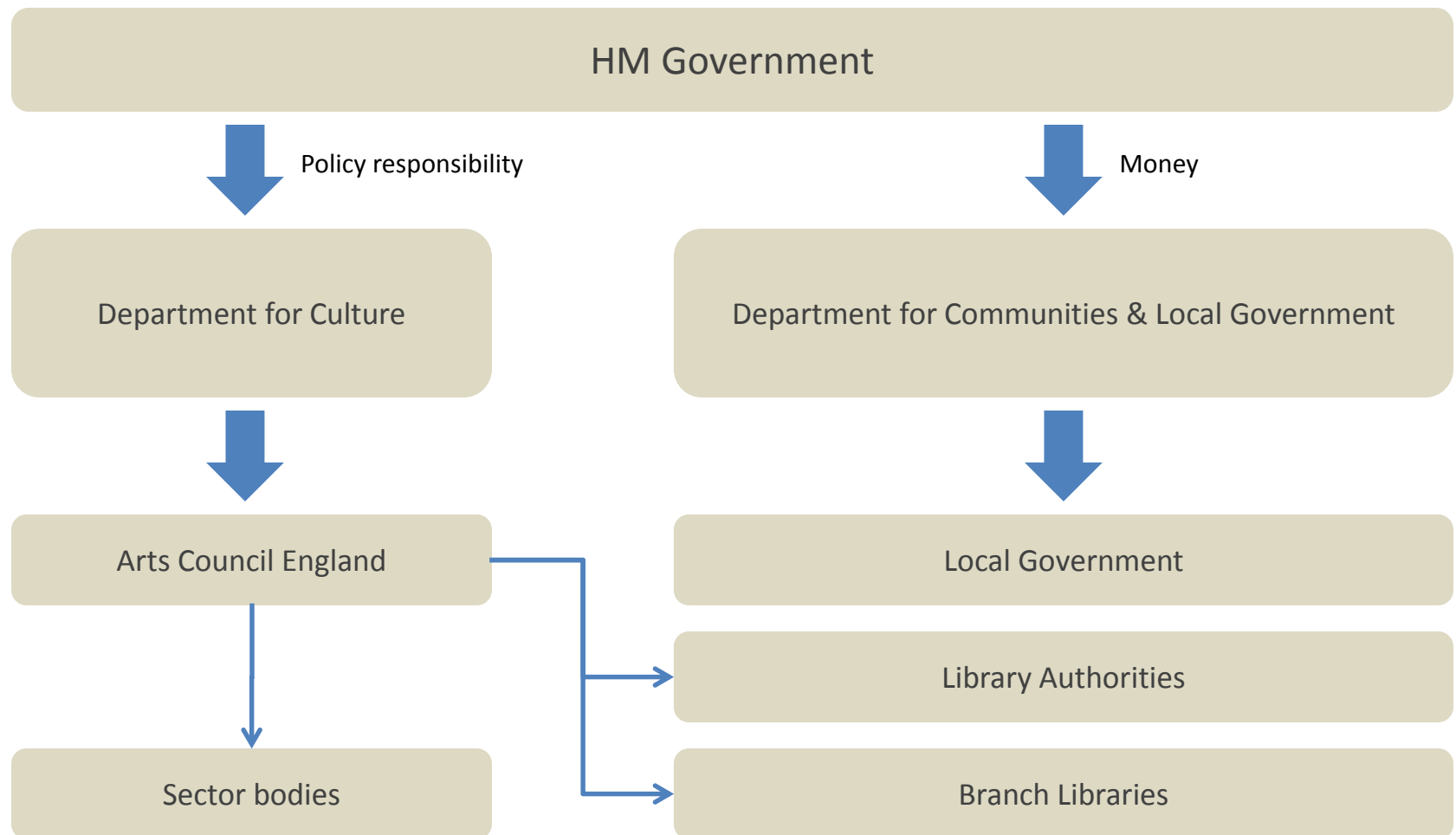
Copyright (C) British Broadcasting Corporation 2016 – www.bbcnews.com

Context



Copyright (C) Public Library News 2016 – www.publiclibrariesnews.com

Political structure & funding



Root causes

There are 4 overlapping sets of causes commonly attributed to this situation:

- **Mission creep** – public library services began to adjust the balance of expenditure away from book stock in the mid-1980's which triggered a collapse in the 'core business' – libraries lost their unique connection to books & literacy in favour of a broader, less appealing 'services' model
- **Advocacy gap** – a great deal of public library advocacy focused on the 'inputs' (what they do) rather than the impact or outputs (the difference they make)
- **Digital disruption** – the rise of connected technologies fundamentally altered consumer behaviours, undermining the case for 'place-based' access to knowledge in favour of online resources. Libraries failed to embrace this change, own it and innovate to keep pace with consumer demand
- **Austerity policy** – a generation of policymakers, less engaged with the social value of libraries, permitted libraries to suffer the twin impacts of austerity (post-2008) and devolution, triggering wholesale closures & 'hollowing-out'




Leadership for Libraries Taskforce

- Established in 2015 in response to William Sieghart's *Review*
- Creates a dedicated team with a Chief Executive, Kathy Settle
- Convened by the Department for Culture and Department for Communities and Local Government
- Brings together all of the major sector organisations and funders

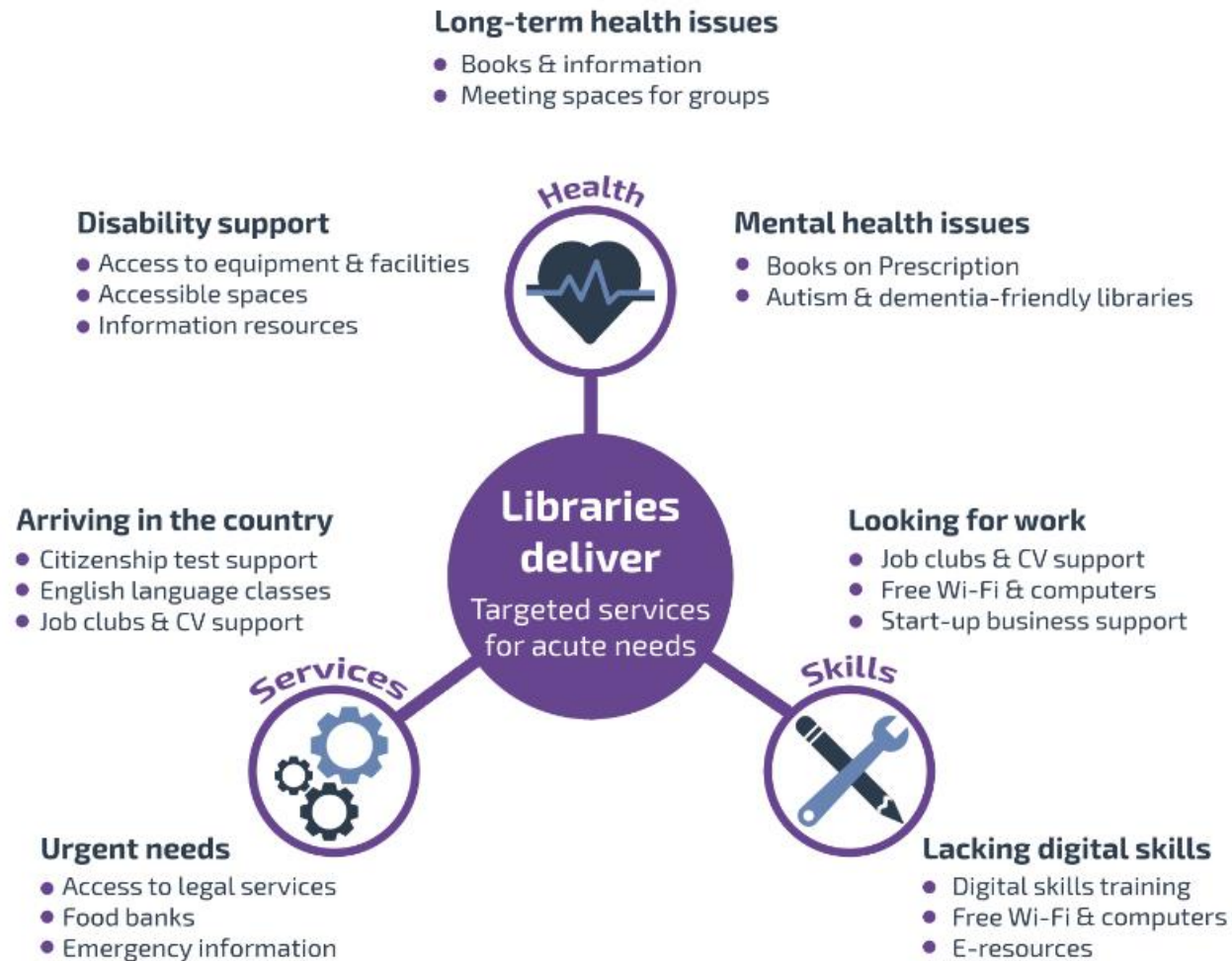
Libraries Deliver



Libraries Deliver

	 Early years	 Active learners	 Active citizens	 Active ageing
Users need	<ul style="list-style-type: none"> • Reading • Digital literacy • Family activities • Life skills 	<ul style="list-style-type: none"> • Study space • Connectivity • Careers • Information 	<ul style="list-style-type: none"> • Community • Business support • Family activities • Learning • Health & wellbeing 	<ul style="list-style-type: none"> • Reading • Digital literacy • Family activities • Health & wellbeing • Social activities
Libraries deliver	<ul style="list-style-type: none"> • Bookstart • Rhymetime • Summer Reading Challenge • Code clubs • Volunteering 	<ul style="list-style-type: none"> • Free Wi-Fi & computers • Free study space • Books & e-resources • Homework clubs • Social spaces • Reading Ahead & Quick Reads 	<ul style="list-style-type: none"> • Free Wi-Fi & computers • Local information • Business & IP Centres • Books & e-resources • Job clubs • Health advice 	<ul style="list-style-type: none"> • Free Wi-Fi & computers • Health information • Books & e-resources • Events & activities • Social spaces • Home library service

Libraries Deliver



Opportunities

- Post-Referendum Government changes
- 'Re-boot' library advocacy
- Embed public libraries into policy for health, education & business
- Strengthen case for 'activist' role of public libraries in the civic society
- Fresh case for libraries as creative spaces at the heart of local economies

Challenges

- No (new) money
- Ongoing cuts to Local Government unaffected
- No national plan or roadmap
- Confusion about 'core' purposes (books, digital, Council services)
- A plan for today, not for tomorrow
- Limited articulation of role of professional librarians

Thank you!

Nick Poole

Chief Executive, CILIP

@CILIPinfo

@NickPoole1

www.cilip.org.uk

www.slideshare.net/cilip